

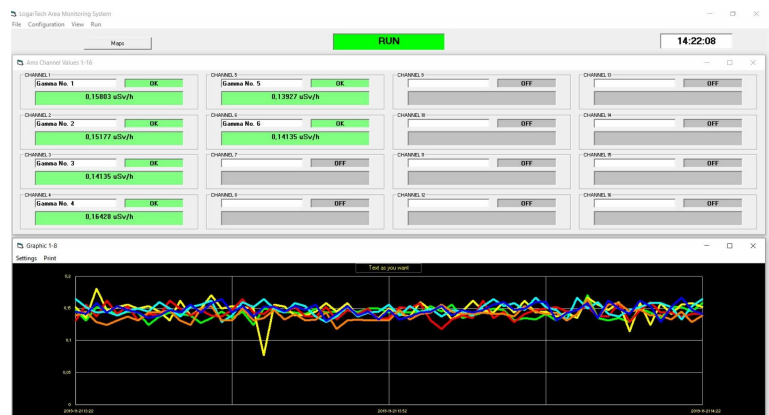
LogarTech Ltd.

AMS32 AREA MEASURING SOFTWARE

The AMS32 software is a very versatile integrated monitoring software.

The software has two essential units:

Data collecting software: up to 32 different measuring devices can be connected to AMS32 software. It performs the data collection, processes the data and stores and handles the data collected. Each of the 32 channels can be configured independently. An alarm level can be set to each channels, ensuring that the software will sign if the given measuring device has crossed the threshold.



Display software: the user may monitor the actual measuring data, or can review the data stored during the previous measurements. The actual measuring data can be seen in the form of a table. Beside there is possibility to upload various maps and then set the place of the different measuring devices. Thus the actual measured value of the channels can be seen directly on the map.

Thanks to the significant features of the AMS32 it is able to handle any type of measuring device, such as temperature measurement, humidity measurement in a glasshouse, or to detection of detector signal in a lab.

System requirements:

- Windows 2000/XP/Vista/Win8/ Win10
- PIII 1000 MHz or better
- At least 256 MB RAM
- At least 100 MB free disk space a HDD-n
- At least one COM port or USB serial converter

References:

- Kaposvár Hospital PET Ciklotron Gamma and neutron dosimetry system
- University of Szeged Nuclear Medicine Gamma dosimetry system
- Persecutor Ltd. High activity radiation sources safety system, 9 different places
- GE Engine Services Veresegyház X-ray labour safety system
- Institute of Isotopes Co., Ltd.
- KFKI Gamma dosimetry system